



**Product catalog Collecting-Systems
for moulded parts**

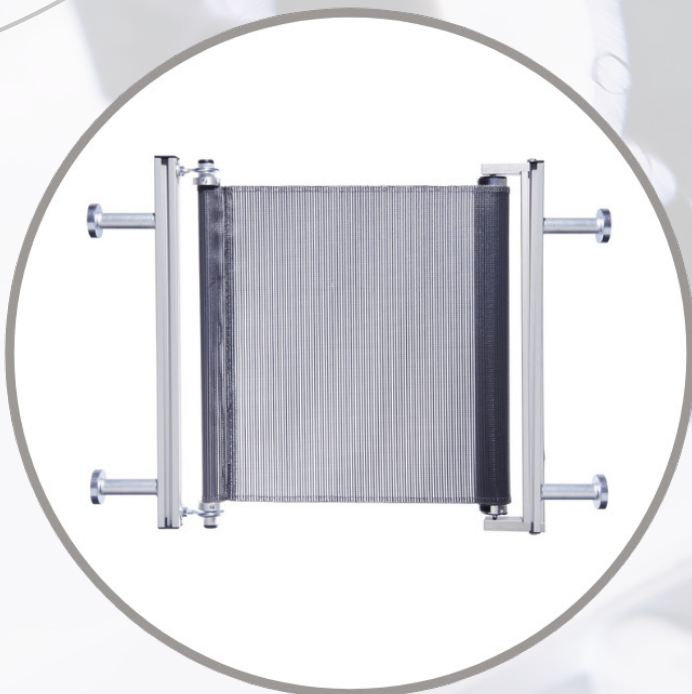
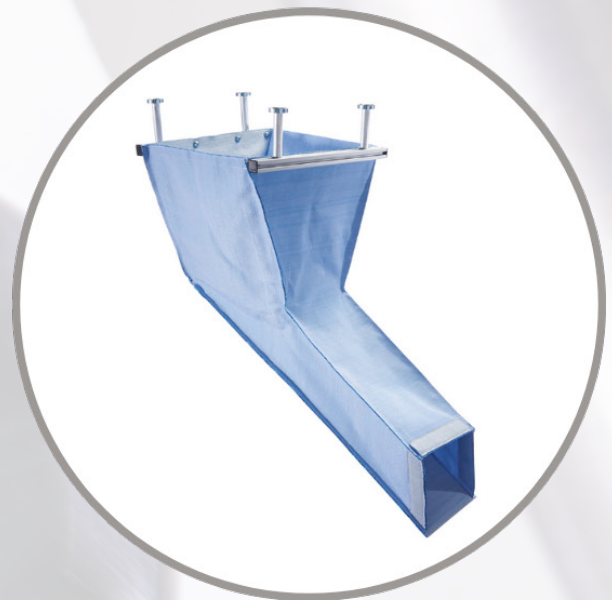
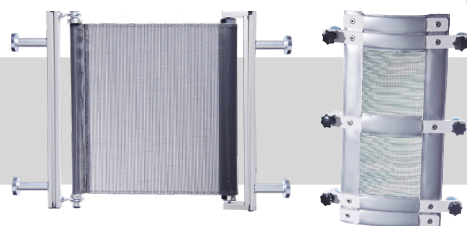
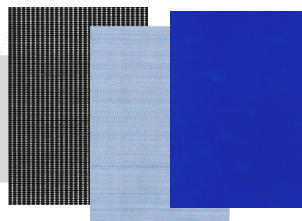


Table of contents

Material overview

Page 03



Side protection

Page 04, 05

Collecting funnels

Page 06-15



Collecting chutes

Page 16-18

Splash mat

Page 19



Options

Page 20-25

Spare parts

Page 26

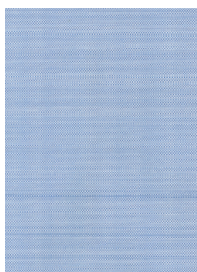


Material overview

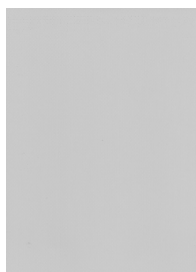
Item-No.	Temperature-resistant up to *	Antistatic	Slipping	Oil-resistant	Abrasion-proof	FDA-licensed
FM100.001	100 °C		✓			
FM100.002	70 °C			✓	✓	
FM100.003	70 °C			✓	✓	
FM100.004	Coating: 180 °C Textile: 300 °C				✓	
FM100.005	90 °C		✓		✓	✓
FM100.006	90 °C		✓		✓	
FM100.007	70 °C					
FM100.008	150 °C					✓
FM100.009	Coating: 315 °C Textile: 500 °C		✓		✓	
FM100.010	90 °C	✓	✓		✓	

* These temperature indications are valid for permanent load. Short term higher loads are possible.

Material for collecting funnels and chutes:



Mat.-no.:
FM100.001
(PE, blue)



Mat.-no.:
FM100.002
(PVC, silver)



Mat.-no.:
FM100.003
(PVC, blue)



Mat.-no.:
FM100.004
(Kevlar,
silver/yellow)

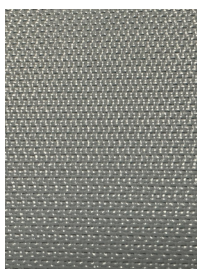


Mat.-no.:
FM100.005
(PP, white,
FDA)



Mat.-no.:
FM100.006
(PBT, white)

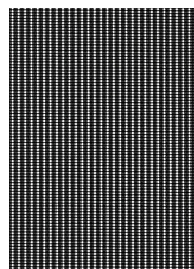
Material for side protection curtain RS:



Mat.-no.:
FM100.009
(PTFE, grey)



Mat.-no.:
FM100.010
(PP, white,
antistatic)

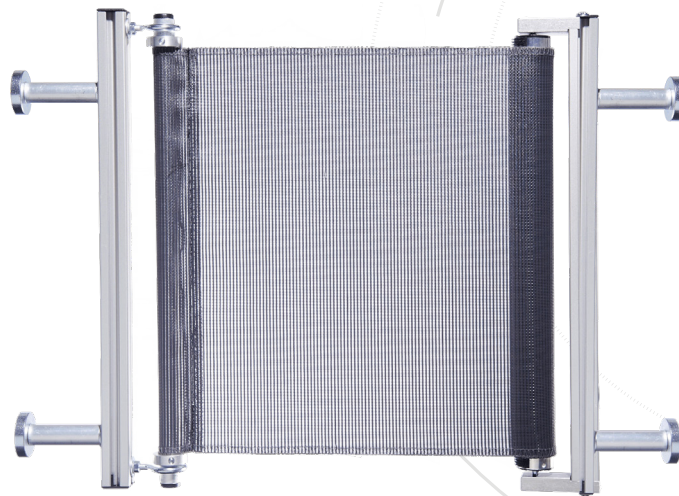


Mat.-no.:
FM100.007
(PVDC,
anthracite)



Mat.-no.:
FM100.008
(PET, white,
FDA)

Side protection curtain RS



Product description

The side protection curtain RS is attached to the side of the tool or the clamping plates of an injection moulding machine via strong permanent magnets. It catches moulded parts after demoulding to prevent the parts from contamination, reduces waste and keeps the environment of the machine clean. The materials used are view permeable and partially FDA approved.

Product features

- + Aluminum profiles as holder
- + Easy assembly via permanent magnets (adjustable in profile)
- + Sturdy, special material moving with the tool, view permeable, also with FDA approval
- + Roll-up mechanism for continuous operation (more than 8 million cycles tested in high-speed simulation)
- + Low space requirement between mould and bars
- + Material: FM100.007 (PVDC, anthracite); FM100.008 (PET, white, FDA)

Options

- | | |
|--------------------------|-------|
| + Handles | P. 20 |
| + Side protection plates | P. 21 |
| + Floating bearing | P. 22 |

Combining several options is only possible to a limited extent!



Scan here to go to the inquiry form!

Folding curtain FS



Product description

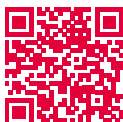
The folding curtain FS is attached to the side of the tool or the clamping plates of an injection molding machine via strong permanent magnets. It catches moulded parts after demoulding to prevent the parts from contamination, reduce waste and keeps the environment of the machine clean. The advantage of the folding curtain are the holding stripes. These can be placed individually to avoid tempering hoses or other obstacles. The folding curtain only requires enough space to the outside when folded to prevent damage.

Product features

- + Easy assembly via permanent magnets
- + Sturdy, special material, view permeable
- + Low space requirement between mould and bars
- + Adaptable to the tool or to tempering hoses by individual displacement of the holding stripes
- + Adapted number of holding stripes depending on the size of the tool and the folding curtain
- + Material: FM100.002 (PVC, silver); FM100.007 (PVDC, anthracite)

The selection of other materials is only possible on inquiry!

Scan here to go to the inquiry form!



Collecting funnel ATB-G



Product description

The collecting funnel ATB-G with straight runout is mounted under the tool of an injection moulding machine via strong permanent magnets. It safely collects the moulded parts after demoulding and transfers them onto a conveyor belt or into a container below the machine. The funnel is movable and follows the tool. Optional equipment such as bafflers or a cut-out for conveyor belt ensures damage-free collection and waste reduction of the moulded parts.

Product features

- + Aluminum profiles as holder
- + Attached to the tool, the clamping plates or in the machine bed
- + Straight runout for transferring moulded parts onto a conveyor belt or into a container below the tool or the machine
- + Depending on the application, different materials are available P. 03

Options

- + Baffler(s) P. 23
- + Cut-out for conveyor belt P. 24



Scan here to go to the inquiry form!

Collecting funnel ATF



Product description

The collecting funnel ATF with straight runout is mounted in the machine bed of an injection moulding machine via strong permanent magnets. It safely collects the moulded parts after demoulding and transfers them onto a conveyor belt or into a container below the machine. The funnel has a fixed frame. Optional equipment such as bafflers or mounting via brackets ensures damage-free collection and waste reduction of the moulded parts.

Product features

- + Fixed frame of aluminum profiles
- + Attached in the machine bed
- + Straight runout for transferring moulded parts onto a conveyor belt or into a container below the tool or the machine
- + Depending on the application, different materials are available P. 03

Options

- + Baffler(s) P. 23
- + Brackets P. 26

Scan here to go to the inquiry form!



Collecting funnel ATF-D



Product description

The collecting funnel ATF-D with two straight runouts is mounted in the machine bed of an injection moulding machine via strong permanent magnets. It safely collects and separates the moulded parts after demoulding and transfers them onto conveyor belts or into containers under the machine. The funnel has a fixed frame. Through the two runouts parts can directly be separated from sprue while falling.

Product features

- + Fixed frame of aluminum profiles
- + Attached in the machine bed
- + Two diagonal runouts for transferring moulded parts onto conveyor belts or into containers under the machine
- + Separates sprue and parts while falling
- + Depending on the application, different materials are available

P. 03

Options

- + Distances
- + Brackets

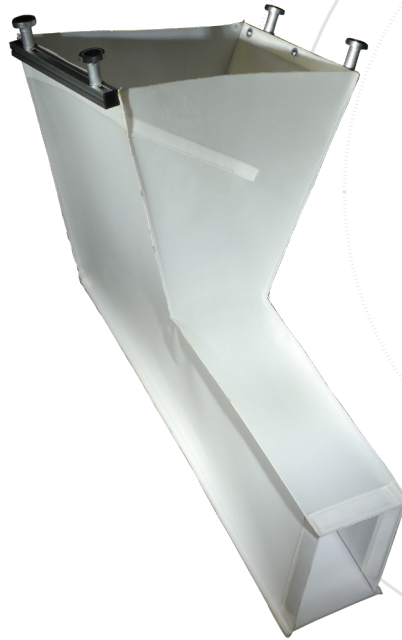
P. 26

P. 26



Scan here to go to the inquiry form!

Collecting funnel ATB-S



Product description

The collecting funnel ATB-S with diagonal runout is mounted under the tool of an injection moulding machine via strong permanent magnets. It safely collects the moulded parts after demoulding and transfers them onto a conveyor belt or into a container next to the machine. The funnel is movable and follows the tool. Optional equipment such as a baffler or a removable base ensures damage-free collection and waste reduction of the moulded parts.

Product features

- + Aluminum profiles as holder
- + Attached to the tool, the clamping plates or in the machine bed
- + Diagonal runout for transferring moulded parts onto a conveyor belt or into a container next to the machine
- + Depending on the application, different materials are available P. 03

Options

- + Baffler(s) P. 23
- + Removable base P. 25

Scan here to go to the inquiry form!



Collecting funnel ATB-S90



Product description

The collecting funnel ATB-S90 with diagonal runout is, compared to the ATB-S, mounted 90° turned under the tool of an injection moulding machine via strong permanent magnets, in direction of the machine. It safely collects the moulded parts after demoulding and transfers them onto a conveyor belt or into a container below the machine. The funnel is movable and follows the tool. Optional equipment such as a baffle or a removable base ensures damage-free collection and waste reduction of the moulded parts.

Product features

- + Aluminum profiles as holder
- + Attached to the tool, the clamping plates or in the machine bed
- + Diagonal runout 90° turned for transferring moulded parts onto a conveyor belt or into a container below the machine
- + Depending on the application, different materials are available

P. 03

Options

- + Bracket(s)
- + Removable base

P. 23

P. 25



Scan here to go to the inquiry form!

Collecting funnel ATB-DS



Product description

The collecting funnel ATB-DS with two diagonal runouts is mounted under the tool of an injection moulding machine via strong permanent magnets. It safely collects and separates the moulded parts after demoulding and transfers them onto conveyor belts or into containers next to the machine. The funnel is movable and follows the tool. Optional equipment such as bafflers or a removable base ensures damage-free collection and waste reduction of the moulded parts.

Product features

- + Aluminum profiles as holder
- + Attached to the tool, the clamping plates or in the machine bed
- + Two diagonal runouts for transferring moulded parts onto conveyor belts or into containers next to the machine
- + Separates sprue and parts while falling
- + Depending on the application, different materials are available

P. 03

Options

- + Baffler(s)
- + Removable base

P. 23

P. 25

Scan here to go to the inquiry form!



Collecting funnel ATB-DS90



Product description

The collecting funnel ATB-DS90 with two diagonal, 90° turned runouts is mounted under the tool of an injection moulding machine via strong permanent magnets. It safely collects and separates the moulded parts after demoulding and transfers them onto conveyor belts or into containers under and next to the machine. The funnel is movable and follows the tool. Optional equipment such as bafflers or a removable base ensures damage-free collection and waste reduction of the moulded parts.

Product features

- + Aluminum profiles as holder
- + Attached to the tool, the clamping plates or in the machine bed
- + Two diagonal runouts for transferring moulded parts onto conveyor belts or into containers under and next to the machine
- + Separates sprue and parts while falling
- + Depending on the application, different materials are available

P. 03

Options

- + Baffler(s)
- + Removable base

P. 23

P. 25



Scan here to go to the inquiry form!

Collecting funnel ATB-L



Product description

The collecting funnel ATB-L with lamellas is mounted under the tool of an injection moulding machine via strong permanent magnets. It safely catches the moulded parts after demoulding and passes them onto a conveyor belt or into a container below the machine. The funnel is movable and follows the tool. Cooling or tempering hoses can be passed through the lamellas easily, without new complex placement of the hoses.

Product features

- + Aluminum profiles as holder
- + Attached to the tool, the clamping plates or in the machine bed
- + Cooling or tempering hoses can easily be passed through the lamellas
- + Material: FM100.002 (PVC, silver); FM100.003 (PVC, blue)

Scan here to go to the inquiry form!



Collecting funnel ATF-L



Product description

The collecting funnel ATF-L with lamellas is mounted in the machine bed of an injection moulding machine via strong permanent magnets. It safely catches the moulded parts after demoulding and passes them onto a conveyor belt or into a container below the machine. The funnel has a fixed frame. Cooling or tempering hoses can be passed through the lamellas easily, without new complex placement of the hoses

Product features

- + Fixed frame of aluminum profiles
- + Attached in the machine bed
- + Cooling or tempering hoses can easily be passed through the lamellas
- + Material: FM100.002 (PVC, silver); FM100.003 (PVC, blue)

Options

- + Distances P. 26
- + Brackets P. 26



Scan here to go to the inquiry form!

Lamella protection LS



Product description

The lamella protection LS is mounted on the clamping plates of an injection moulding machine via strong permanent magnets. It safely catches the moulded parts after demoulding and transfers them into the installed funnel of the machine. Cooling or tempering hoses can be passed through the lamellas easily, without new complex placement of the hoses.

Product features

- + Aluminum profile as holder
- + Attached on the clamping plates of the machine
- + Cooling or tempering hoses can easily be passed through the lamellas
- + Material: FM100.002 (PVC, silver); FM100.003 (PVC, blue)

Scan here to go to the inquiry form!



Collecting chute ARF



Product description

The collecting chute ARF is mounted in the machine bed of an injection moulding machine via strong permanent magnets and chains. It safely collects the moulded parts after demoulding and transfers them onto a conveyor belt or into a container next to the machine. The chute has a fixed frame. In addition the chute is constructed extra flat and space-saving

Product features

- + Fixed frame of aluminum profiles
- + Attached on the tool or in the machine bed
- + Extra flat and space-saving construction
- + Depending on the application, different materials are available

P. 03

Options

- + Bracket(s)

P. 26



Scan here to go to the inquiry form!

Collecting chute ARB



Product description

The collecting chute ARB is mounted on the clamping plates and the installed funnel of an injection moulding machine via strong permanent magnets. It safely collects the moulded parts after demoulding and transfers them into the installed funnel of the machine. The chute is moveable and follows the tool. This chute closes the gap between the tool and the installed funnel of the machine.

Product features

- + Aluminum profiles as holder
- + Attached on the clamping plates and the installed funnel of the machine
- + Extra flat and space-saving construction
- + Depending on the application, different materials are available

P. 03

Scan here to go to the inquiry form!



Cross bar protection HS



Product description

The cross bar protection HS is mounted on the cross bar of an injection moulding machine via Velcro®. It safely catches the moulded parts after demoulding and transfers them into the installed funnel of the machine. In addition the chute is constructed extra flat and space-saving.

Product features

- + Mounted via Velcro® on the cross bar
- + Extra flat and space-saving construction
- + Material: FM100.002 (PVC, silver); FM100.003 (PVC, blue)



Scan here to go to the inquiry form!

Ausspritzmatte



Product description

The splash mat is attached to the clamping plates with sewn-in magnets. It catches liquid plastic that is ejected when the injection molding machine starts up, thus preventing contamination of the machine

Product features

- + Easy assembly with sewn-in magnets
- + Particularly heat-resistant, coated fiberglass fabric
- + Material: FM100.009 (PTFE, grey)

Scan here to go to the inquiry form!



Options



Handles

To ensure easy handling during the installation and removal of the side protection curtain, side handles can be integrated.

Pros

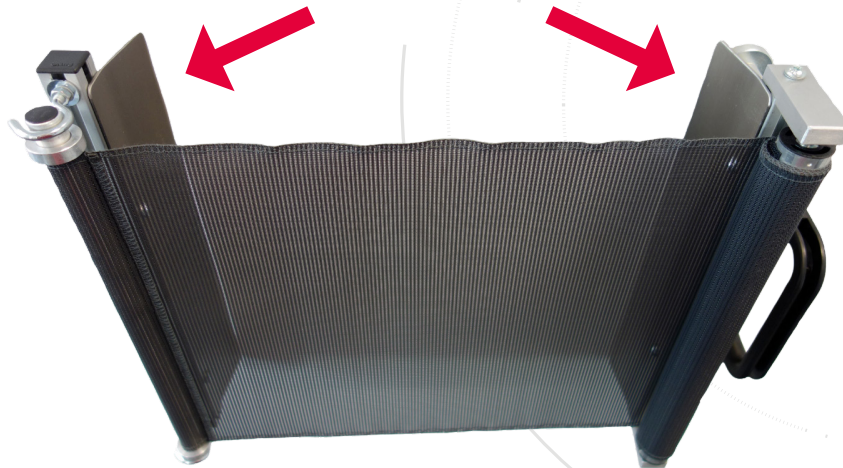
- + Highest adjustment comfort when aligning the side protection curtain to the tool
- + Quick installation
- + Energy-saving during attachment

Products

- + Side protection curtain RS

P. 04

Options



Side protection plates

To reduce the gap between the side protection curtain and the tool or clamping plate, lateral side protection plates can be attached.

Pros

- + Small parts can no longer escape laterally between the side protection curtain and the tool.
- + Clean machine environment
- + Production accurate to the number of pieces
- + Cost savings through reduced waste

Hint

- + The use is exclusively possible in conjunction with a 45 mm distance
- + Attachment of the side protection plates is only possible with standard heights. You can find an overview of our standard sizes in the inquiry form
- + Not combinable with the floating bearing

Products

- + Side protection curtain RS

P. 04

Options



Floating bearing (patented)

To easily align the side protection curtain with the tool, our patented ,floating bearing can be installed, which is rotatably mounted on the hinge side of the side protection curtain.

Pros

- + It compensates for any non-parallel mounting of the roller element
- + Quick and easy alignment of the side protection curtain with the tool or clamping plates
- + Extends the service life of the roll fabric by reducing fabric wear

Hint

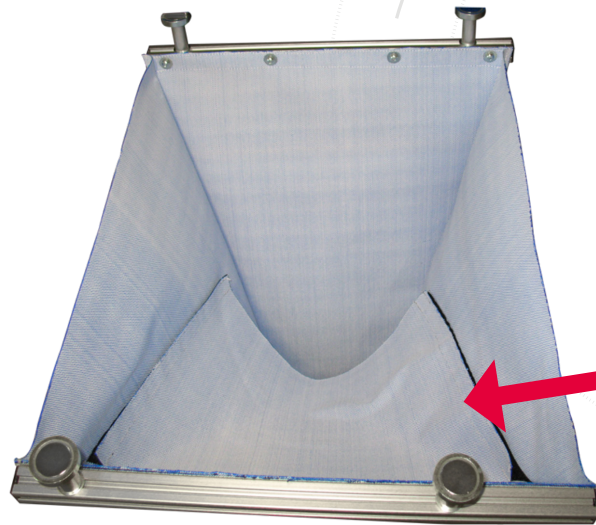
- + Not compatible with the side protection plates

Products

- + Side protection curtain RS

P. 04

Options



Baffle

To reduce the fall height and speed of parts when caught by funnels, the baffle can also be used.

Pros

- + Gentle part conveying
- + Easy to replace
- + For straight and diagonal collecting funnels
- + Cost savings through waste reduction

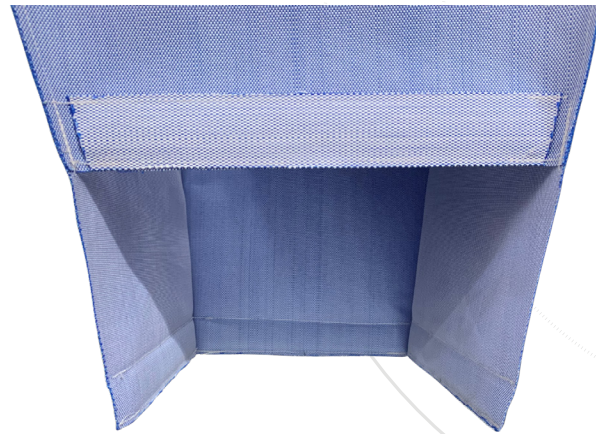
Hint

- + The size is calculated based on the customer's part size
- + The direction is defined according to the customer's preferences
- + The baffle is fastened with Velcro®. Alternative fastenings are available only upon request

Products

- | | |
|------------------------------|-------|
| + Collecting funnel ATB-G | P. 06 |
| + Collecting funnel ATF | P. 07 |
| + Collecting funnel ATB-S | P. 09 |
| + Collecting funnel ATB-S90 | P. 10 |
| + Collecting funnel ATB-DS | P. 11 |
| + Collecting funnel ATB-DS90 | P. 12 |

Options



Cut-out for conveyor belt

The funnel ATB-G can be equipped with a customizable cutout at the desired side, allowing for even more precise transport of the parts onto a conveyor belt.

Pros

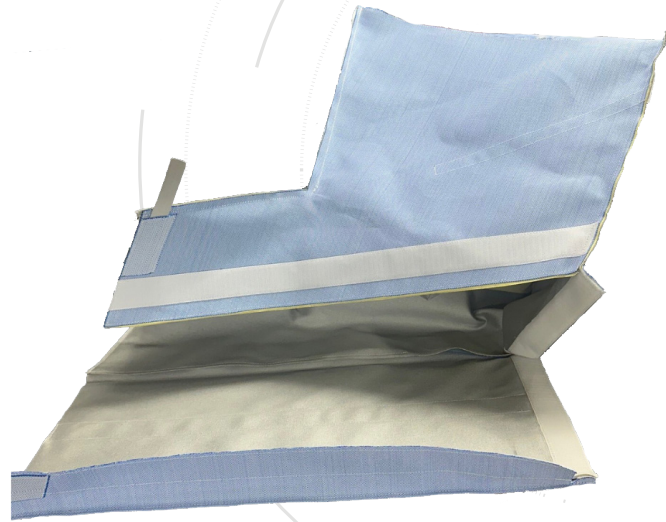
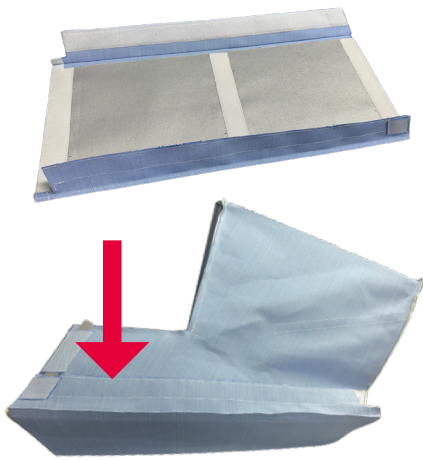
- + Secure and precise part routing
- + Cost savings through reduced waste
- + Adjustable to conveyor belts

Products

- + Collecting funnel ATB-G

P. 06

Options



Removable base

Our diagonal funnel products can be equipped with an removable base, allowing for an effortless replacement of the funnel's bottom side.

Pros

- + Easily interchangeable
- + Product-specific material selection
- + Gentle catching and safe transport of parts
- + Depending on the application, different materials are available (except for FM100.007 und FM100.008)

P. 03

Hint

- + The removable base is attached by means of Velcro®. Alternative fastenings are available upon request

Products

- + Collecting funnel ATB-S
- + Collecting funnel ATB-S90
- + Collecting funnel ATB-DS
- + Collecting funnel ATB-DS90

P. 09

P. 10

P. 11

P. 12

Spare parts

Item-No.	Designation
111.000.009	Bracket 70 mm including magnet Ø32 mm
111.000.014 A	Magnet with M5 thread and pin, Ø32 mm
111.000.015 A	Magnet with M5 thread and pin, Ø25 mm
111.000.016 A	Magnet with M5 thread and pin, Ø20 mm
111.000.114 A	Magnet with M6 thread and pin, Ø32 mm
111.000.214 A	Magnet with screw hook, Ø32 mm
111.000.314 A	Magnet with M5 thread without pin, Ø32 mm
111.000.414 A	Magnet with countersunk hole, Ø32 mm
111.000.017 A	T-nut M5 for profile, sliding block
111.000.021 A	Black cover cap, 20x20 mm
111.000.036	Aluminum profile, 20x20 mm
111.000.058 A	Eye bolt with T-nut
111.000.065 A	Shortened screw hook M5, eye bolts
111.000.080	Mounting set with chains and magnets with screw hooks
111.000.215 A	Circlip, retaining ring

* Also available on request in various sizes: roller rod, aluminum holder tube with blind plugs, and spacer tube with threaded rod and T-nut.

Bracket including magnet

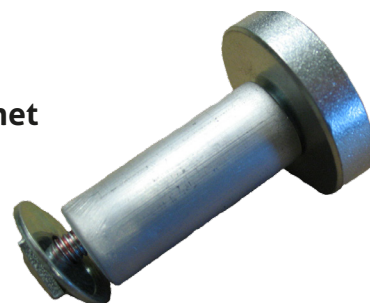


Magnets

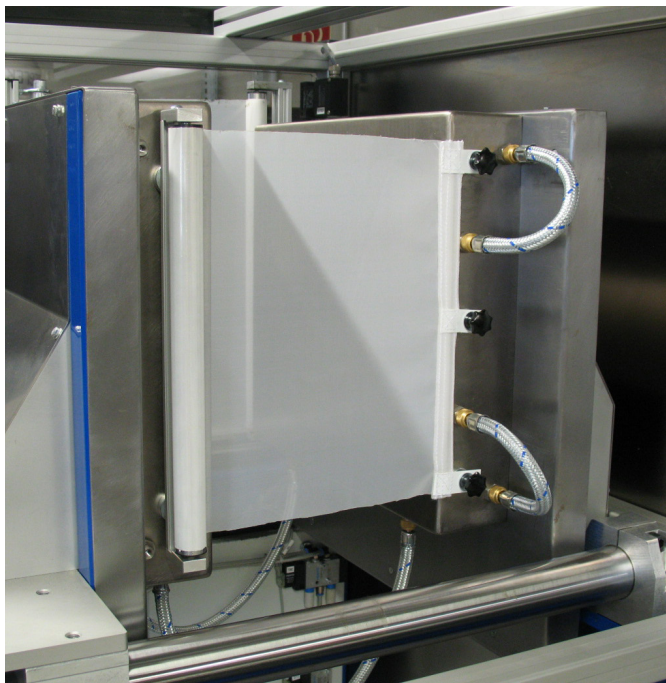


Chains and magnet with screw hook

Distance including magnet



Game-changing Solutions – Used Worldwide



You need a customized solution?

Our experts are at your service! Contact us to find the optimal solution for your application together.

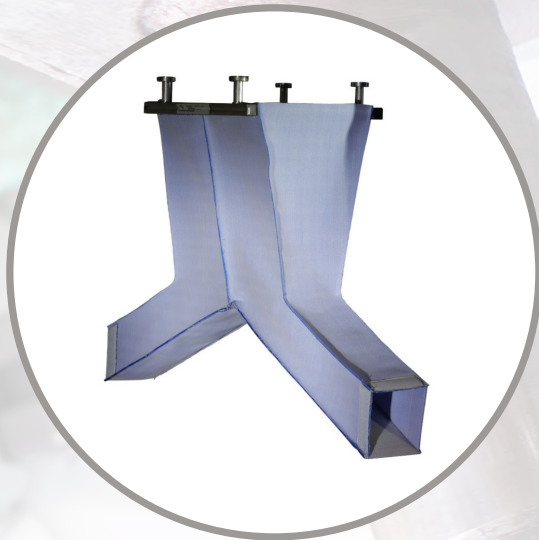
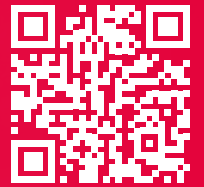
You want to submit an inquiry?

Visit our website or scan the QR-code directly to access our inquiry forms. Please provide the exact dimensions for the desired product so that we can make a precise estimation.



Scan this QR-code
and send us your inquiry!

**SAFE. CLEAN.
EFFICIENT.**



HOLZER GmbH

Maurerstraße 14
89542 Herbrechtingen
Germany

+49 (0) 7324 9654-0
info@holzer-gmbh.com
www.holzer-gmbh.com